

JEFFERSON



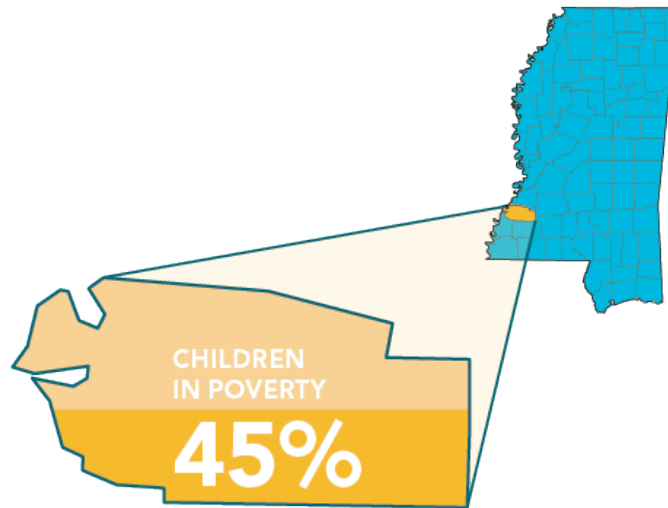
EDUCATION

BY PUBLIC SCHOOL DISTRICT

JEFFERSON

TOTAL DISTRICT ENROLLMENT	1,224
% PROFICIENT OR ABOVE IN 3RD GRADE LANGUAGE ARTS	8%
% PROFICIENT OR ABOVE IN 3RD GRADE MATH	8%
CHRONIC ABSENCE	12%
DROPOUT RATE	4%
GRADUATION RATE	86%

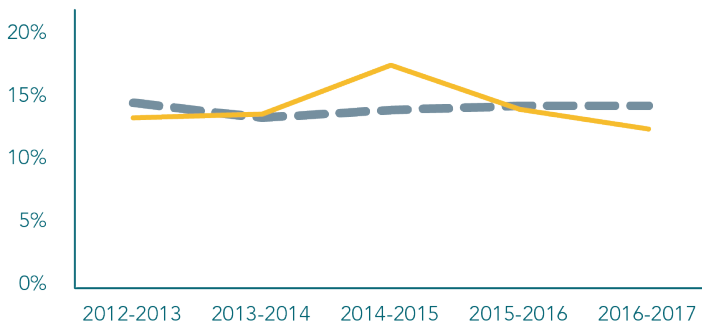
DEMOGRAPHICS



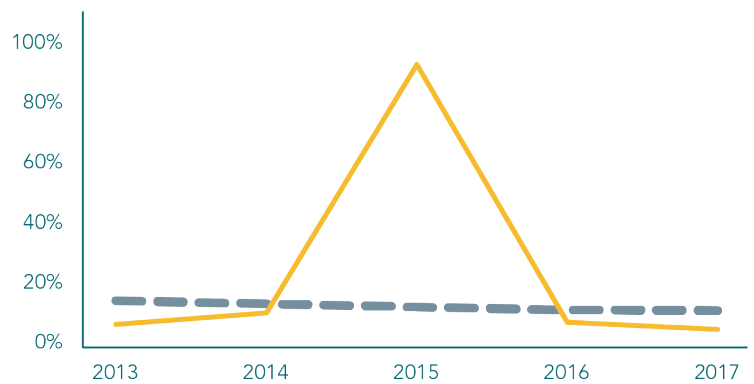
TOTAL POPULATION	7,528	NO PARENT EMPLOYED	31%
TOTAL BIRTHS IN 2016	87	SINGLE PARENT HOUSEHOLD	74%
WHITE POPULATION	13%	POVERTY OF ALL AGES	34%
BLACK POPULATION	86%	MOTHERS WITHOUT HIGH SCHOOL DIPLOMA	3%

CHRONIC ABSENCE AND DROPOUT RATES

CHRONIC ABSENCE



DROPOUT RATE



MS JEFFERSON