

HINDS



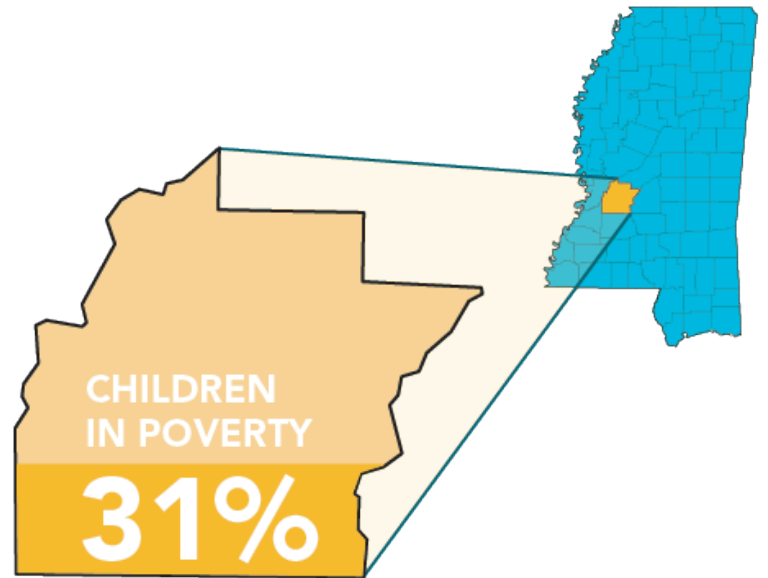
EDUCATION

BY PUBLIC SCHOOL DISTRICT

CLINTON | HINDS | JACKSON

	CLINTON	HINDS	JACKSON
TOTAL DISTRICT ENROLLMENT	5,264	5,798	25,595
% PROFICIENT OR ABOVE IN 3RD GRADE LANGUAGE ARTS	61%	33%	19%
% PROFICIENT OR ABOVE IN 3RD GRADE MATH	63%	39%	19%
CHRONIC ABSENCE RATE 2016/17	16%	15%	17%
DROPOUT RATE 2017	8%	10%	21%
GRADUATION RATE 2017	86%	84%	71%

DEMOGRAPHICS

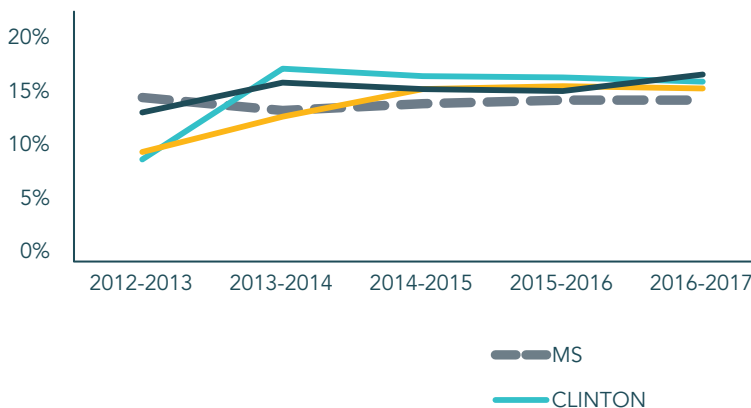


TOTAL POPULATION	244,596
TOTAL BIRTHS IN 2016	3,121
WHITE POPULATION	26%
BLACK POPULATION	71%

NO PARENT EMPLOYED	13%
SINGLE PARENT HOUSEHOLDS	59%
POVERTY OF ALL AGES	21%
MOTHERS WITHOUT HIGH SCHOOL DIPLOMA	15%

CHRONIC ABSENCE AND DROPOUT RATES

CHRONIC ABSENCE



DROPOUT RATE

