

## Update | May/June 2013



[About Us](#)

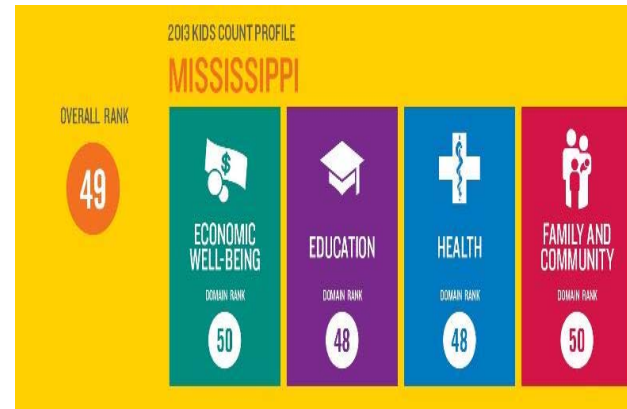
**Free Access & Reliable Data**

*Looking for the most current data on child well-being?*

Our National KIDS COUNT data center provides state rankings for four domains: Economic Well-Being, Education, Health, and Family & Community.

[Read on...](#)

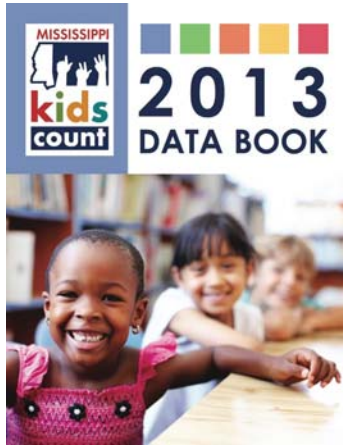
## Mississippi Moves to 49th



Mississippi has improved its ranking for overall child well-being according to new data released in the Annie E. Casey Foundation's KIDS COUNT Data Book. Eight of the 16 indicators used to rank states in the areas of economic well-being, education, health and family and community show slight improvements, moving the state into the 49th position for the first time in the 24 year history of the foundation's Data Book. New Mexico fell to 50th. New Hampshire, Vermont and Massachusetts ranked highest for overall child well-being.

Here is a quick look at how Mississippi fared:

**Economic Well-Being: 50th** - Mississippi showed a decline in all four areas of economic



**MS Data Book  
Access Online!**  
[Click Here](#)



**Luminary Award Recipient**  
Honorable William F. Winter with  
Mrs. Winter  
at Light Up The Night Celebration  
January 31, 2013  
[See The Night's Photos](#)

 [Join Our Mailing List](#)

measurement.

**Education: 48th** - Math and reading proficiency levels improved along with the percentage of children attending pre-school while the percentage of high school students not graduating on time remained unchanged.

**Health: 48th** - The number of Mississippi Children without health insurance improved along with two other health indicators, but the percentage of low-birth weight babies worsened.

**Family and Community: 50th** - Although it ranked 50th in this category, Mississippi did show some improvement in two of the four measured areas. The number of teen births per 1000 went from 61 in 2005 to 55 in 2010.

"While the Health and Education indicators have improved somewhat, keeping Mississippi out of its perennial 50th spot, the high percentage of children living in poverty coupled with children living in households whose parents lack secure employment continue to be of concern," said Dr. Linda Southward, Mississippi KIDS COUNT director. "Improving quality early care and learning environments and having families with secure employment are two of the critical factors in advancing the overall well-being of Mississippi's children and youth."



To see specifics on Mississippi's data and how other states compare check out the new [KIDS COUNT](#) Data Book.





[About FCRU](#)

## We'd like to hear from you!

Tell us how you're using data from Mississippi KIDS COUNT to further the work of your organization or you as an individual. Drop us an [email](#) and give us some examples of how KIDS COUNT has benefited you. Also please be watching for an upcoming Mississippi KIDS COUNT outreach survey. In order to improve our mission and service, we need to hear from you!

## Stay Connected

Join the conversation and make a difference!

### *Fitness Fest*

Stop by the Mississippi KIDS COUNT booth when you check out [Fitness Fest](#) at the Jackson Convention Complex on July 13th!

### *Third-Grade Reading*

See the latest [research](#) on the importance of third-grade reading.

### *MS KIDS COUNT Success Stories*

Interested in programs or organizations that improve the well-being of children and families in your community?

[View 2013 Success Story Winners](#)

### *2013 Mississippi Infographics For You*

Writing a final report or applying for an important grant? We think our infographics focused on health,

education, and housing & employment in Mississippi might be what you need. Located in our 2013 Data Book and online, we hope you find them useful.

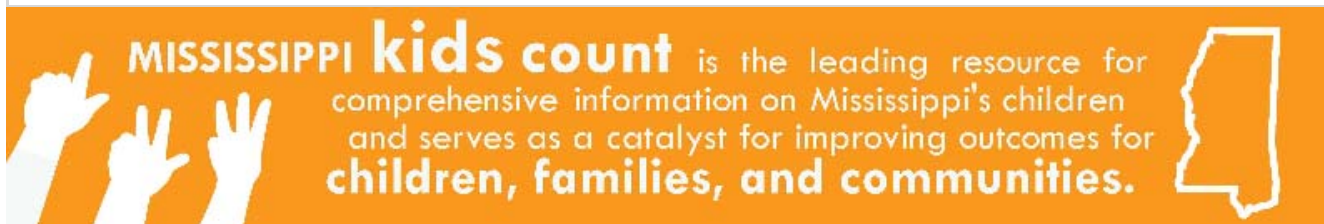
[Download Health & Wellness Infographic](#)

[Download Education Infographic](#)

[Download Housing & Employment Infographic](#)

***Request MS KIDS COUNT Data Workshop***

We have the tools and resources you need. Follow us on [Twitter](#) for upcoming webinars or [contact us](#) to schedule a workshop in your community.



[Forward this email](#)



Try it FREE today.

This email was sent to msusrc@gmail.com by [mskidscount@ssrc.msstate.edu](mailto:mskidscount@ssrc.msstate.edu) | [Update Profile/Email Address](#) | Instant removal with [SafeUnsubscribe™](#) | [Privacy Policy](#).

MSU SSRC | One Research Park, Suite 103 | Starkville | MS | 39759